



KPC | UK
Killeshal Precast

building into the future since 1969

MULTIPAL

Support Line Drainage



Visit our website: www.killeshalprecast.co.uk



Made From Environmentally Friendly Recycled HDPE - Killeshal Present the Support Line Drainage System...

The Support Line Drainage system, composed of high grade HDPE, offers many advantages - robustness, stability and flexibility being among them.



V-Channel



S -Channel

- Robust:** Break-proof edges and enormous stability prevent wastage during laying, storage & transport. The channels are temperature resistant from -20°C to $+95^{\circ}\text{C}$.
- Flexible:** The system is easy to lay and can be easily cut on site using a hand-saw. The range of variety in the system allows for multi-functionality, accommodates a broad range of loads and negotiates the required balance of aestheticism and utility. Accessories and fittings are available throughout the range.
- Environmentally Friendly:** The use of recycled materials in production means precious natural resources are saved. The channels are themselves recyclable and can be re-used in their own manufacturing process

LOADING & DESIGN

V-Channels can be used for building, civil engineering, road building, traffic routes, landscaping and sports facilities. This encompasses load class A15 to D400.
 S-Channels, installed at shallower depths, is ideal for drainage of houses, yards and gardens up to load class C250.

The Channels feature a smooth, pore free surface for efficient self cleaning.

The channels also feature external ribs at the side and bottom for secure fixing in concrete - highlighting the intelligent design of the system. The top of the channel includes a fold over detail and break-proof edges. The lids, which range from galvanised, cast iron and stainless steel to recycled plastic, sit flush with or overlay the top of the channel for seamless installation and drainage.

THE LOAD CLASSES

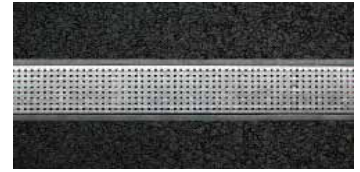
- Class A15:** Areas that are used by pedestrians and cyclists only.
- Class B125:** Footpaths, pedestrian areas, car parks and comparable areas.
- Class C250:** Only for drainage channels in in the kerb area i.e. extending maximum 0.5m into the carriageway and 0.2m into the footpath, measured from the edge of the kerb; also for hard shoulders.
- Class D400:** Carriageways of roads, including pedestrian streets; parking areas.

The information contained in the brochure was up to date at the time of going to print. Photographs, drawings, sizes and reference numbers are given as an indication only and can be changed without notice. Killeshal Precast Concrete Ltd reserves the right to modify product specification without notice.



THE LIDS

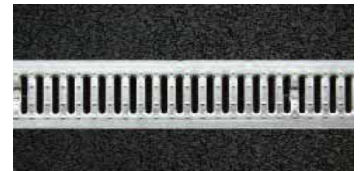
- Perforated Heelguard Galvanised or Stainless Steel Lid
Loading Classes: A15
Used: In Pedestrian and similar zones, where aesthetics are important. Suitable for S and V Channels.



- Slotted Recycled Plastic Lid
Loading Classes: A15
Used: In Residential and Pedestrian Zones, where aesthetics are slightly less important. Flush fitting, including fixing. Suitable for S and V Channel.



- Slotted Galvanised Steel Grating
Loading Classes: A15
Used: In Residential and Pedestrian Zones. Flush fitting, including fixing. Suitable for S and V Channel.



- Galvanised Steel Mesh Grating
Loading Classes: A15, B125
Used: In Residential, Pedestrian and Light Traffic Areas. Flush fitting, including fixing. Suitable for S and V Channel.



- Galvanised Steel Mesh Grating
Loading Classes: A15, B125, C250
Used: In Light Commercial Zones. Surface fitting, including fixing. Suitable for S and V Channels.

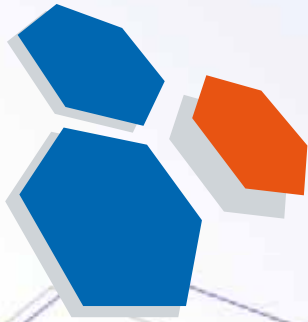


- Cast Iron Slotted Grating
Loading Classes: A15, B125, C250, D400
Used: In all trafficked areas including industrial areas. Flush fitting, including fixings. Suitable for V Channels up to D400 and S channels up to C250 loading class.



MULTIPAL RANGE

The information contained in the brochure was up to date at the time of going to print. Photographs, drawings, sizes and reference numbers are given as an indication only and can be changed without notice. Killeshal Precast Concrete Ltd reserves the right to modify product specification without notice.



KPC | UK

Killeshal Precast

building into the future since 1969



Killeshal Precast Concrete Ltd.
Tel: 0800 0393367 | Fax: 00353 57 9353272
Email: sales@killeshalprecast.co.uk | Web: www.killeshalprecast.co.uk



Concrete Built is Better Built



Technical Queries: 0800 0393367