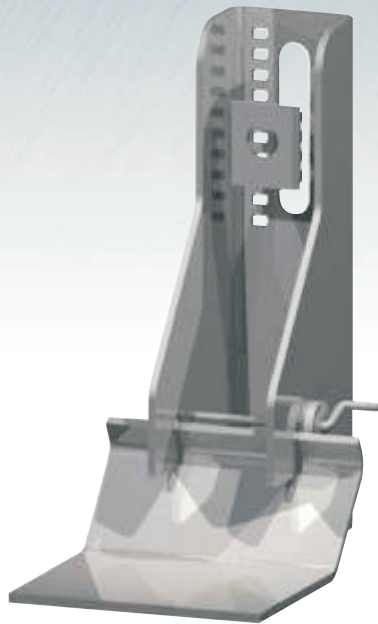




> Introducing ACS Atlas



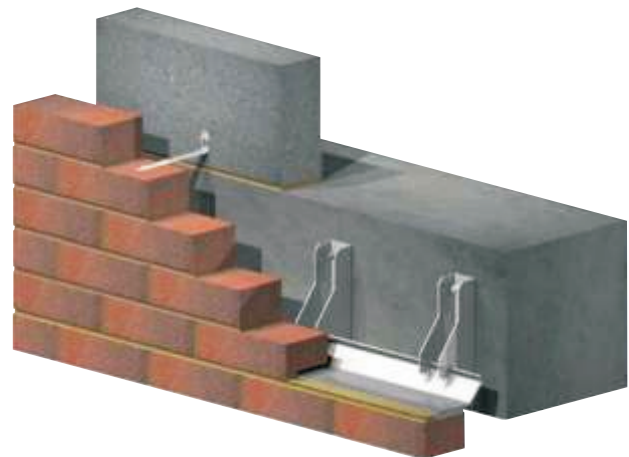
ACS has been designing, manufacturing and supplying a diverse range of structural fixings to the construction industry for over twenty-five years. During this time our reputation has been built upon product innovation and quality of service.

In modern construction, the demand for brick and stone cladding is greater than ever. As buildings are becoming taller the need for masonry support is dramatically increasing. The standard welded bracket support systems currently used throughout the industry involve lengthy approval and manufacturing processes. The new Atlas' 'clip-in' system provides a cost effective and durable alternative that is both quick and simple to install and is available ex-stock through an automated approval process.

> ACS ATLAS

ACS Atlas comprises of a formed angle platform with printed 'fixing zones' and a range of front-loading interchangeable brackets with an integrated cam locking system designed for convenient on-site self-assembly.

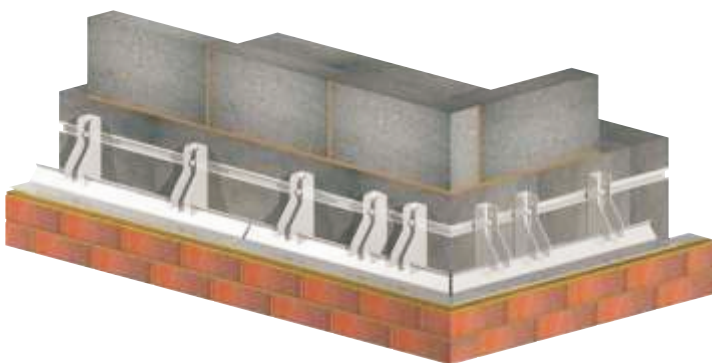
Brackets come in a range of sizes to suit cavities ranging from 60mm to 130mm and systems are available to suit loads of up to 14kN.



> THE ATLAS ADVANTAGE

- Fast and simple to install
- Supplied from stock using component parts
- More adjustable than welded solutions
- Allows for unforeseen site variables
- Can be safely assembled by one person
- Unique front-loading system
- Automated specification process
- Non project specific
- Easy to store and transport

See page four for specific performance characteristics





> Benefits

> FAST & SIMPLE INSTALLATION

Installation of Atlas facilitates significant savings against standard welded systems.

Simply fix two brackets to the structure and clip the angle platform to the front of the brackets. Finally twist the cam lever on the side of the bracket to securely lock the angle into place.

Once installed, if a different bracket depth is required, simply reverse the process and change the bracket.

Atlas has been specially designed to be fitted in the most demanding of situations. Its component parts have been streamlined to reduce the need for tools and minimise the chance of losing them down the cavity.

> FRONT LOADING

The unique front-loading angles are supplied in easy to handle standard 800/1000mm lengths. Therefore an entire system can be fitted by one semi-skilled construction worker in a matter of minutes.

A full range of standard front-loading corner angles are also available from stock.

> SUPPLIED EX-STOCK

Atlas is supplied 'off-the-shelf' from stock and is available for immediate dispatch.

All components come clearly marked and as they are not project specific excess items can be reused elsewhere.



> GREATER ADJUSTMENT

Atlas encompasses features that enable user to instantly adapt the support system whilst on-site to suit their individual requirements.

The complementing range of interchangeable brackets and shims allow the system to be adjusted in 1mm increments. This will safely accommodate any cavity between 60-130mm.

The ACS 'Alpha' bracket and washer boasts an extra 5mm of vertical adjustment over traditional serrated systems, whilst providing additional lock safe features that prevent catastrophic failure.

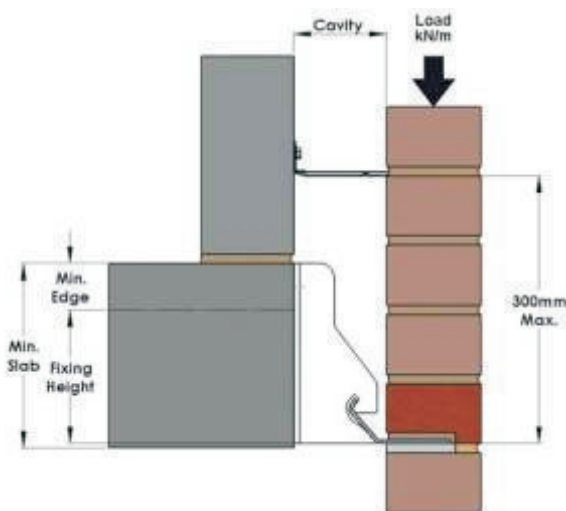
Printed fixings zones on each angle allow for lateral adjustments of 25mm on either side that ensures the correct installation.

> EASY TO SPECIFY

To specify your Atlas system simply log on to the ACS Stainless Steel Fixings website (www.acsstainless.com) and follow the on-screen instructions, or use the load/cavity tables found on page four.

In addition, Atlas specification software can automatically produce supporting engineering calculations and approval drawings at the touch of a button thus reducing the time associated with the standard manual approval process.

All Atlas components have been independently tested using certified calculations and physical test data.



>Performance

> ATLAS OVERVIEW TABLE

	Maximum Load (kN/m)	Angle Thickness (mm)	Angle Length (mm)	No. of Brackets	Bracket Position (mm)	Bracket Height (mm)
Atlas 10	10	4	1000	2	500	195
Atlas 12	12	5	1000	2	500	195
Atlas 14	14	5	800	2	400	195

> Atlas 10

Fixing	Min. Fixing Height (mm)	Min. Edge (mm)	Min. Slab (mm)	Maximum load (kN/m) for various cavity widths (mm)								
				60	70	80	90	100	110	120	130	
Axis T-Head Bolt	150	75	205	10*	10	10	10	10	10	10	9.9	9.6
Atlas Concrete Anchor	150	90	220	10*	10	10	10	10	10	10	10	10
Atlas Set Screw	150	-	-	10*	10	10	10	10	10	10	10	10
Atlas Hollow Fixing	150	-	-	10*	10	10	10	10	10	10	10	10

> Atlas 12

Fixing	Min. Fixing Height (mm)	Min. Edge (mm)	Min. Slab (mm)	Maximum load (kN/m) for various cavity widths (mm)								
				60	70	80	90	100	110	120	130	
Axis T-Head Bolt	150	75	205	12*	12	11.7	11.2	10.8	10.3	10	10	9.6
Atlas Concrete Anchor	150	90	220	12*	12	12	12	12	12	12	12	12
Atlas Set Screw	150	-	-	12*	12	12	12	12	12	12	12	12
Atlas Hollow Fixing	150	-	-	12*	12	12	12	12	12	12	12	12

> Atlas 14

Fixing	Min. Fixing Height (mm)	Min. Edge (mm)	Min. Slab (mm)	Maximum load (kN/m) for various cavity widths (mm)								
				60	70	80	90	100	110	120	130	
Axis T-Head Bolt	150	75	205	14*	14	14	14	13.5	12.9	12.5	12	12
Atlas Concrete Anchor	150	90	220	14*	14	14	14	14	14	14	14	14
Atlas Set Screw	150	-	-	14*	14	14	14	14	14	14	14	14
Atlas Hollow Fixing	150	-	-	14*	14	14	14	14	14	14	14	14

* Load achieved using 60mm bracket depth within 0mm masonry offset

Distributed by:



KPC - Killeshal Precast

Tel: 0800 0393367

Fax: 00353 57 9353272

E-mail: sales@killeshalprecast.co.uk

Lintels, Sills, Kerbs, Fencing, Drainage Systems, Service Boxes
...AND MUCH MORE

Visit our website for full range of products

www.killeshalprecast.co.uk



The information relating to construction applications detailed in this literature are indicative only. In all cases suitably qualified persons should ensure correct project working details. Whilst the advice contained within this document has been prepared with every care to ensure that any information is accurate, no liability or responsibility of any kind is accepted in respect of ACS Stainless Steel Fixings Ltd. ACS Stainless Steel Fixings Ltd has a policy of continuous product development and as such reserve the right to alter product design and specification with out prior notice.