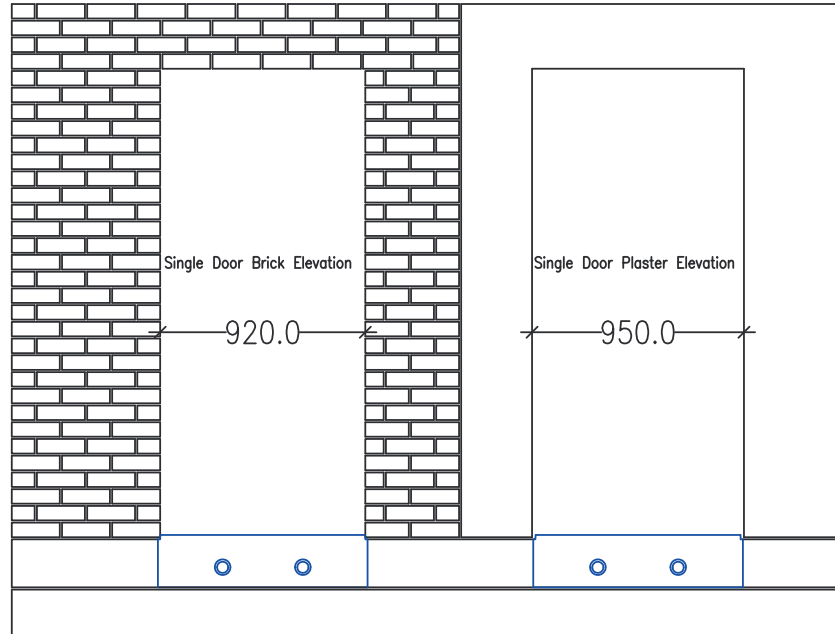


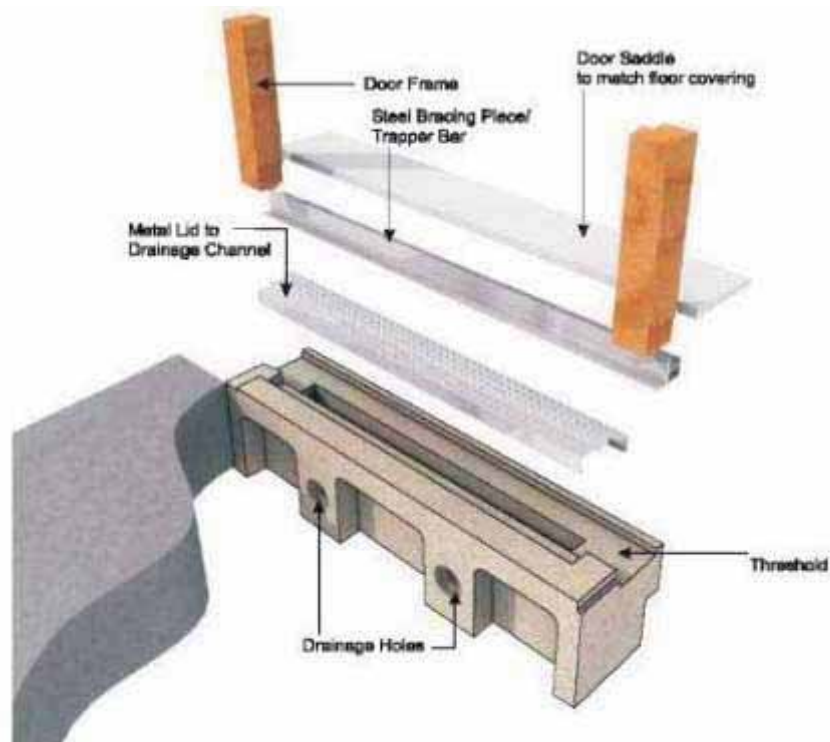
KILLESHAL

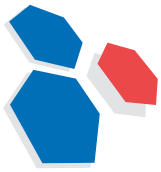
Tel: 0800 0393367
Fax: 00353 57 9353272
E-mail: sales@killeshalprecast.co.uk
Web: www.killeshalprecast.co.uk

Technical information- Light-Munster Joinery Threshold



Approx Weight: 45 kg





building into the future since 1969

Sizes

The KPC Threshold - Disabled Access-Light is available in one length for now but can be extended using our traditional concrete extension pieces if required and is suitable for use with the Munster Joinery solid timber doorframe.

- 1 The single door unit comes in a 940.0-mm length and is suitable for use with a door frame of the same length.
- 2 Traditional Concrete Extensions are available in 100-mm increments to allow for longer sidelights of double sidelights.

Installation

The KPC Threshold - Disabled Access-Light should be installed when the radon barrier has been fitted and before the floor is po detail sheet 1).

The overall height of the unit is 215.0-mm at the back and 235.0-mm at the front, in the middle 920.0-mm of the single unit. The overall width of the unit is 225.0-mm.

In Section the KPC Threshold - Disabled Access should be installed as follows. (See Detail Sheet 1)

The back of the unit should be installed to be level with the finished floor. The middle 920.0-mm of the front of the unit should be 20.0-mm above the level of the finished floor. The front face of the unit should be flush with the outer skin of blockwork/brickwork and the back face of the unit should be 75-mm in front of the inner skin of blockwork. The gap behind the unit should be filled using a traditional stock brick on edge.

The unit should have a DPC wrapped behind it, outside the radon barrier and finished under the half door saddle.

In Elevation the KPC Threshold - Disabled Access should be installed as follows. (See Detail Sheet 2)

In the case of a brickwork opening the reveal of the brick should encroach 10.0-mm onto the concrete unit. There is a notch at single units and the single side light units indicating this point.

In the case of a blockwork opening the reveal of the block should be kept 5.0-mm back from the concrete unit.

If the masonry reveals are not constructed as described above, it is likely that the metal lid will not fit the concrete threshold. This will lead to expensive remedial work on site.

Munster Joinery doorframe and metal lid.

The doorframe with trapper bar is installed at its usual time. The contractor has the option of fitting the lid at this stage and protecting it from damage or fitting the lid at the house finishing stage.

Drainage and Access details.

The concrete unit is supplied with two drainage holes to the front. The unit arrives to site with two rubber pipe connectors installed in these holes. These allow 1 1/2" waste pipes to be connected to the unit as required and the water transferred to either the storm water system on site or a soakaway.

The regulations insist on a level platform immediately outside the door. This platform should be approached at a maximum gradient of 1:50. The platform should be finished level with the front edge of the concrete unit, 20.0-mm above the finished floor level inside.